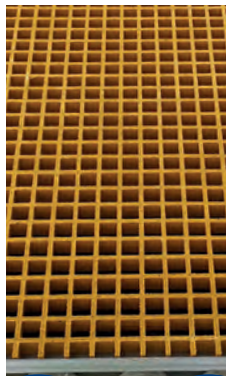
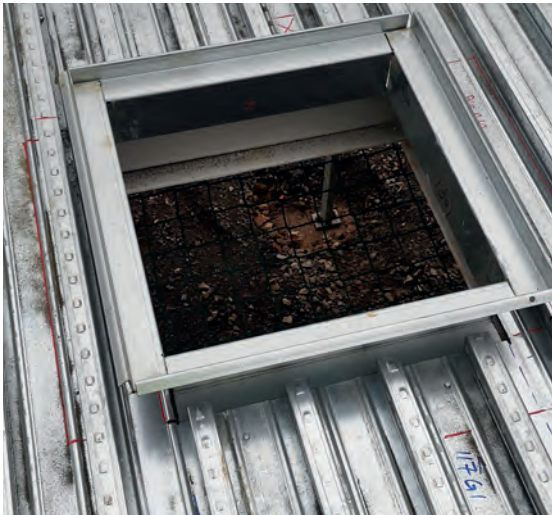


THE STAGE - SHOREDITCH

A 21st Century Solution to a 16th Century Building Site



COMFLOR 51+



INSTALLATION



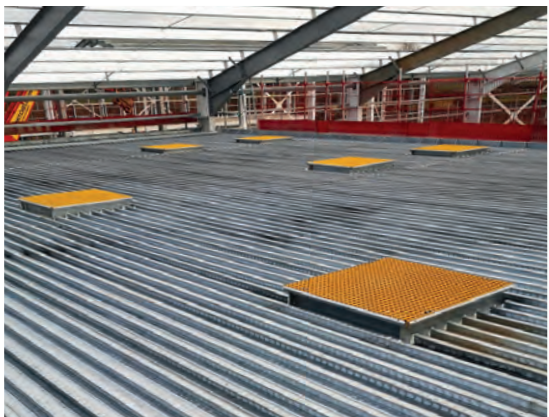
wHOLE.Protect

The Stage in Shoreditch is a £750m mixed-use development on the site of Shakespeare's former Curtain Theatre in London. It includes a 13-storey office block with the main super-structure utilizing structural steelwork along with a composite metal deck floor.

With an excellent track-record in multi-storey construction, Composite Profiles UK supplied and installed 15,000m² of ComFlor® 51+ metal decking flooring. Through early engagement with the construction team, Composite Profiles not only provided a cost-effective metal decking scheme but were able to solve a recurring problem for principal contractors – numerous service voids!

SOLVING THE PROBLEM OF NUMEROUS SERVICE VOIDS

The structure has more than 130 voids of varying size. Traditionally, each of these must be fully protected prior to the installation of the composite decking. Composite Profiles eliminated this problem with their innovative **wHOLE.Protect™** system. Not only does **wHOLE.Protect™** remove the requirement for void edge protection, it also provides a long-lasting anti-slip finish to every void, which could last for the lifetime of the building.



Hassle-free void protection every time, saving you time and money, whilst improving site safety.

